



pureablue

Pre-Engineered Buildings

Windyloo[®] Standard



COLLECTION
WELL



SEWER
SEPTIC

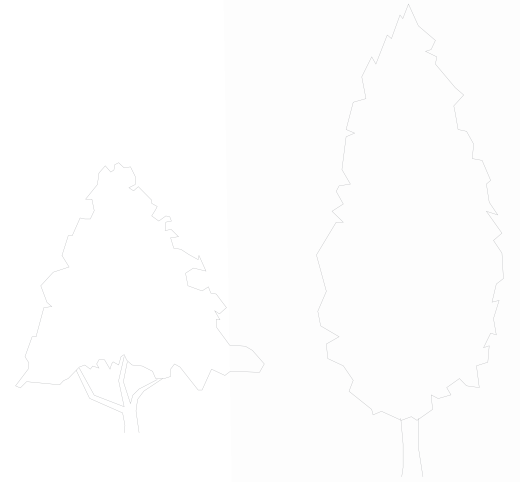


ON-SITE
TREATMENT



Contents

- 03** Overview
- 04** Plans & Elevations
- 06** General Specifications
- 08** Our Construction Strategy
- 10** Other Pre-Fab Buildings

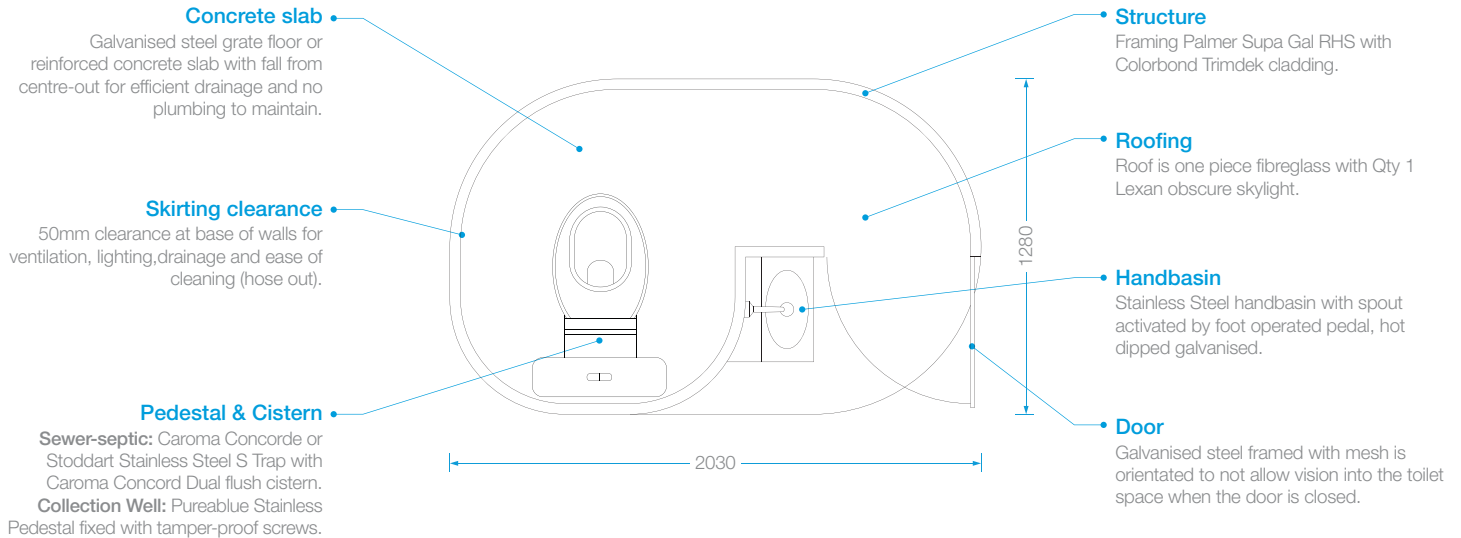


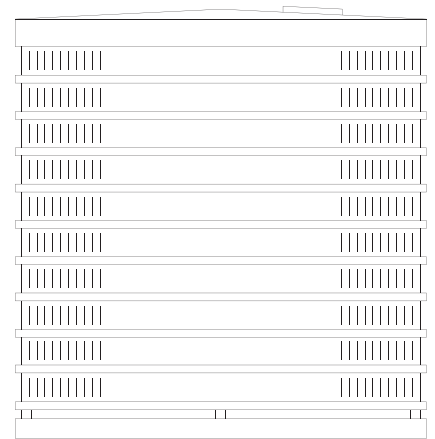
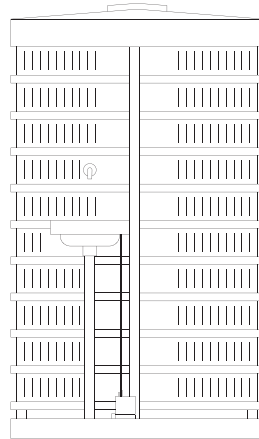
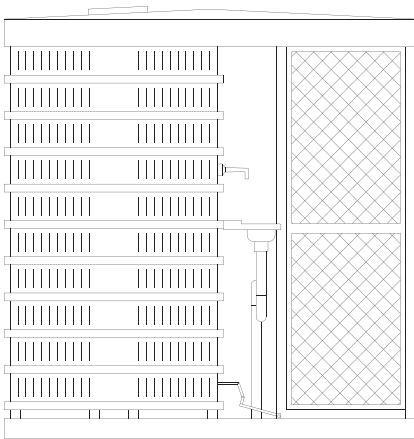


Windyloo[®] Standard

The original iconic Windyloo. A building with steel frame and Colorbond cladding housing a single standard booth. The building can be configured with a concrete slab or steel grate base for sewer/septic long-drop waste system configuration.

Plans & elevations





➔ We can supply detailed drawings of building integration with waste systems in PDF and CAD Drawing format.

General specifications

General

- Steel framed with Colorbond cladding, concrete base and fitted out with sink, cistern and pan, and some plumbing.

Floor/slab

- Steel mould cast, 100mm thick, 32 mpa concrete.
- One layer of F82 mesh.
- The product is cast upside down, hence the floor is of the steel smooth non-slip finish.
- Qty 8, 12mm Ramset concrete inserts cast in for structure attachment.
- *Option:* Can be supplied with self cleaning galvanised mesh floor.

Structure

- Steel framing of Palmer Supa Gal RHS.
- Floor to wall shell attachment by flat bar brackets hot dipped galvanised, all anchored to concrete by M12 stainless steel bolts into threaded inserts cast into the base.
- Shell fixed to brackets by multiple 5mm monel pop rivets.
- The structure is delivered bolted to the concrete floor.

External cladding

- Clad with Colorbond Trimdeck, crimped curved and fixed to steel framing by Qty 30 Monel 5mm rivets and Qty 10 plated tek screws.

Roofing

- Roof is one piece fibreglass with Qty 1 Lexan obscure skylight fixed to steel framing and cladding by Qty 10, 5mm monel pop rivets.

Door

- Door framed with Palmer Supa Gal RHS, lined with Lysaght RO820 mesh.
- Hinged by Qty 3, 100mm plated hinges.
- Plated torsion bar spring door closer.
- Plated steel door opening limiter with rubber stop to prevent hinge stretch from over opening of the door.
- The mesh is orientated to not allow vision into the toilet space when the door is closed.

Pedestals (Sewer/septic configuration)

- Dual 6/3 flush cistern and P trap pan is fitted. No sewer drainage plumbing is provided. Access holes for the P trap pan and sink outfall drainage is made through the wall and concrete floor.

Pedestals (CWT configuration)

- Pureablue stainless steel AS1428.1 (2001) and AS1546.1 compliant pedestal fitted plus below the floor odour skirt. All fixed by tamperproof stainless steel button head bolts. Special key supplied to client on delivery.

Internal furniture

- Toilet paper holder is fabricated from pipe and flat bar, hot dipped galvanised, with capacity for quantity three standard rolls with 8mm stainless lock bar and pad lock.

Plumbing

- Half inch copper silver soldered in jig and tested. Lagged and fitted to trenches cast in to the underside of the concrete floor.

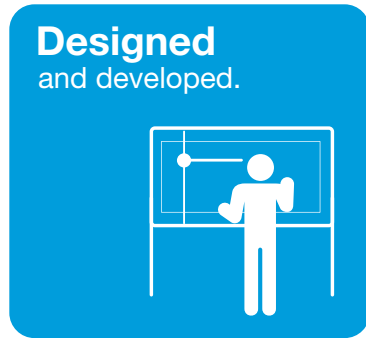
Handbasin

- Clark Y 4200 Stainless steel sink mounted externally.
- Sink spout over sink activated by foot operated pedal, hot dipped galvanised.

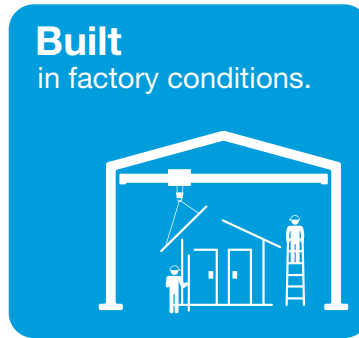


Construction strategy

The construction philosophy of Pureablue is a focus on quality design and pre-fabrication style construction of steel and concrete components. Pre-fabrication allows for more manufacturing possibilities and also ensures high quality as work can be performed in factory conditions with specialized tools that are impractical and costly to transport to the construction site.



Designed
and developed.



Built
in factory conditions.



Transported
to site.

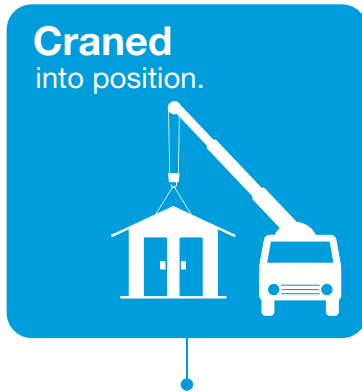


1 Our specialist team of architectural designers equipped with the latest 3D Cad tools work closely with our construction team to achieve designs that result in quality solutions and craftsmanship.

2 Our philosophy is to build as much of the project in our workshop as possible to achieve the greatest quality and efficiency. We always have the right tools on hand for the job, and have the right environment for the best craftsmanship.

3 The job is shipped as a 'package' of all required component ready for installation. Transport trucks are organised to arrive on site when the installation team has completed ground work and ready for the building.

By minimizing on-site work we can minimize unforeseen variables, such as bad weather, which can make projects run over time and over budget. Also, site costs such as barricading and risks of public injury are minimised.



4 Buildings and auxiliary structures are craned into position. Final trim components are added.



5 If applicable, water and sewerage services are connected. Facility is tested and cleaned ready for opening.



6 Final handover of fully complete operational facility including system management and maintenance guide.

Pre-Fab Building Range

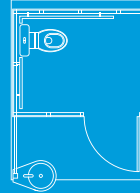
Breezyloo[®] **Standard**



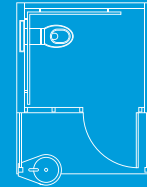
Windyloo[®] **Standard**



Countrystyle[®] **CS1**



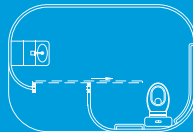
CAB[®] **1**



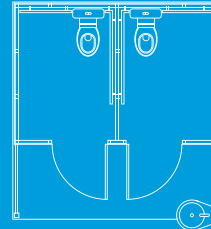
Breezyloo[®] **Disabled**



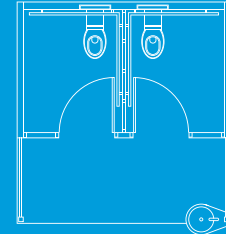
Windyloo[®] **Disabled**



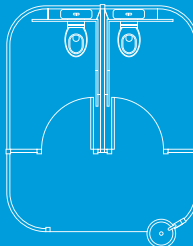
Countrystyle[®] **CS2**



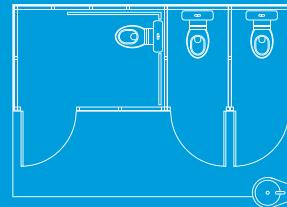
CAB[®] **2**



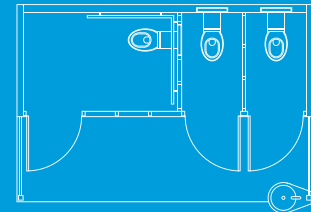
Windyloo[®] **Dual**



Countrystyle[®] **CS3**



CAB[®] **3**



T 02 6772 3810

W www.pureablue.com.au

E info@pureablue.com.au