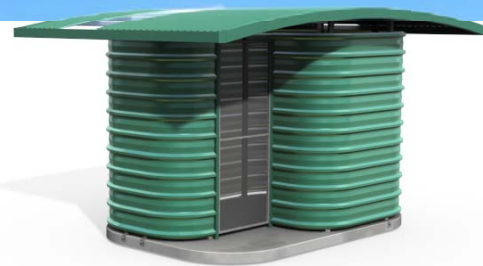




pureablue

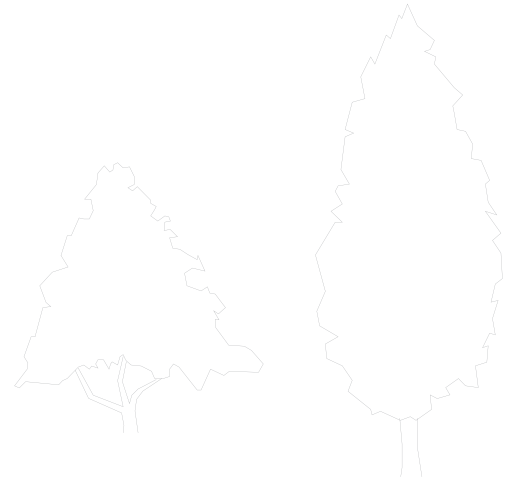
Pre-Engineered Buildings

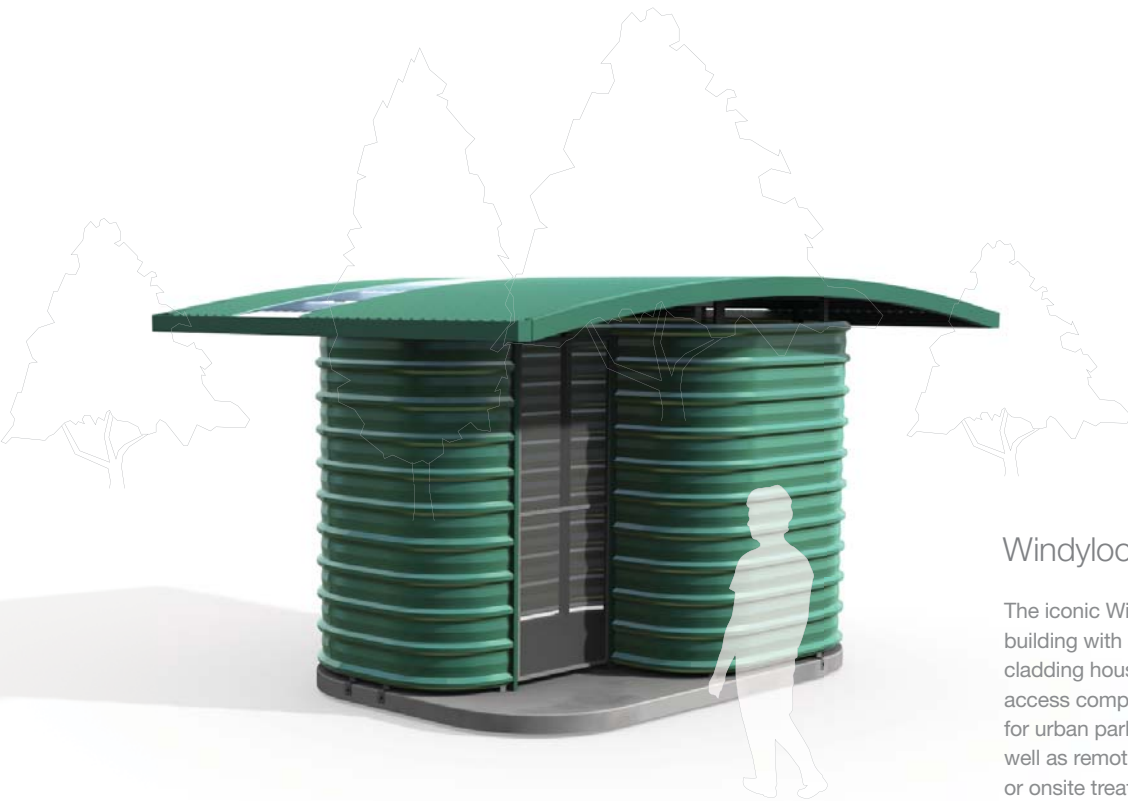
Windyloo[®] Disabled



Contents

- 03** Overview
- 04** Plans & Elevations
- 06** General Specifications
- 08** Our Construction Strategy
- 10** Other Pre-Fab Buildings

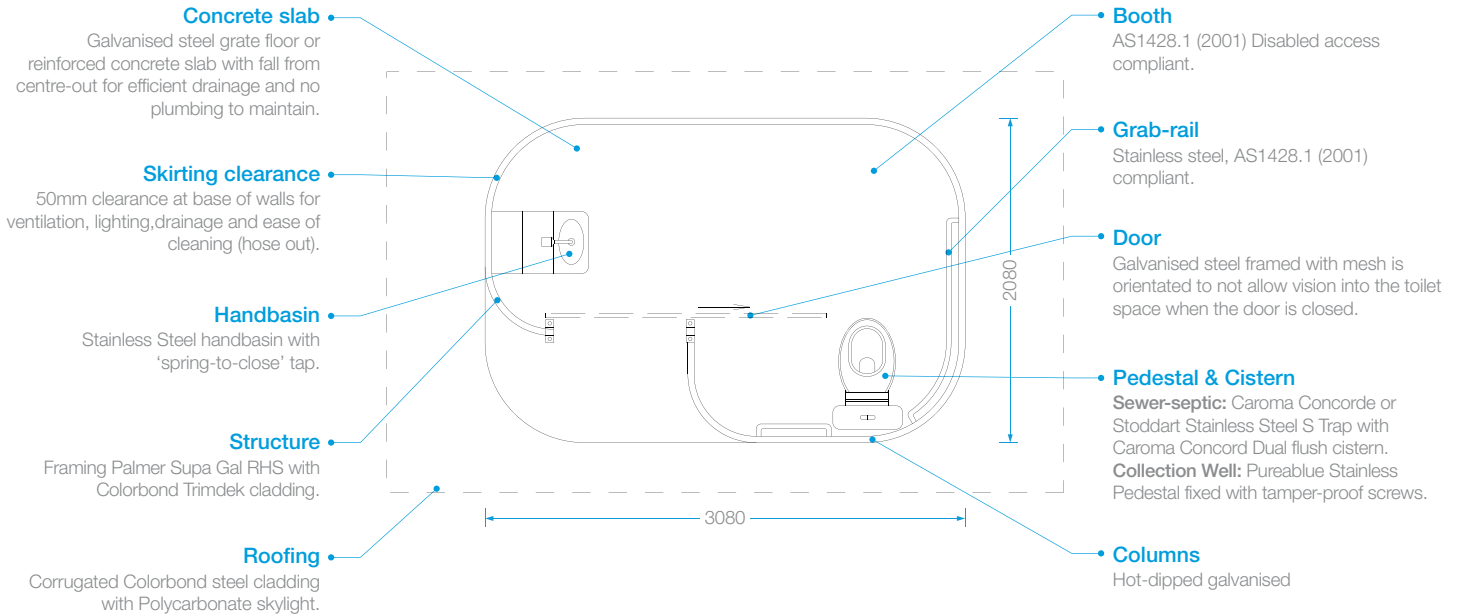


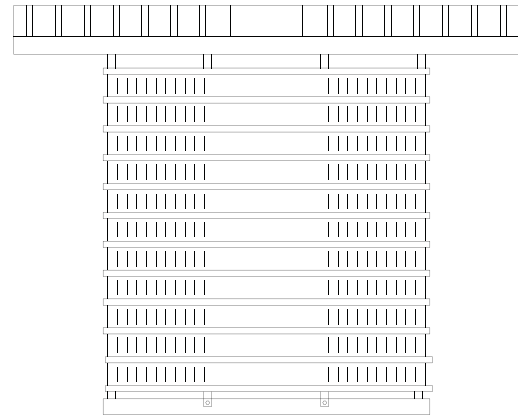
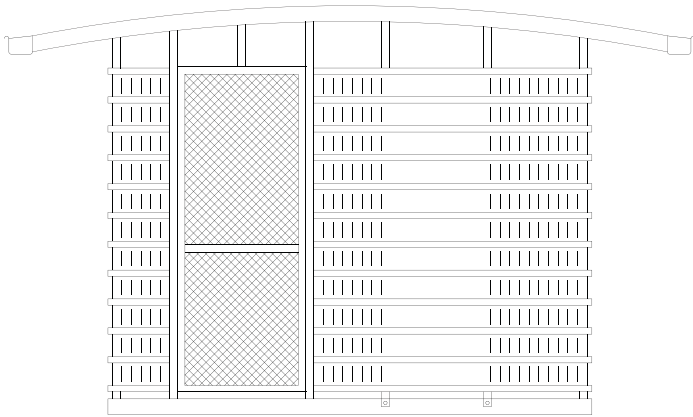


Windyloo[®]Disabled

The iconic Windyloo curved architectural style. A building with steel frame and Colorbond cladding housing a AS1428.1 (2001) disabled access compliant booth. The building is suited for urban parks with sewer and water facilities as well as remote applications with a collection well or onsite treatment waste system configuration.

Plans & elevations





➔ We can supply detailed drawings of building integration with waste systems in PDF and CAD Drawing format.

General specifications

General

- Steel framed with Colorbond cladding, concrete base and fitted out with sink, cistern and pan, and some plumbing.
- The booth and sink area are designed to conform to AS1428.1 (2001) Disabled Access.

Floor/slab

- Steel mould cast, 100mm thick, 32 mpa concrete.
- One layer of F82 mesh.
- The product is cast upside down, hence the floor is of the steel smooth non-slip finish.
- Qty 8, 12mm Ramset concrete inserts cast in for structure attachment.
- *Option:* Can be supplied with self cleaning galvanised mesh floor.

Structure

- Steel framing of Palmer Supa Gal RHS.
- Floor to wall shell attachment by flat bar brackets hot dipped galvanised, all anchored to concrete by M12 stainless steel bolts into threaded inserts cast into the base.
- Shell fixed to brackets by multiple 5mm monel pop rivets.
- The structure is delivered bolted to the concrete floor.

External cladding

- Clad with Colorbond Trimdeck, crimped curved and fixed to steel framing by Qty 30 Monel 5mm rivets and Qty 10 plated tek screws.

Roofing

- Colorbond 0.42 Custom Orb decking fixed with colour matched crest fixed screws to manufacturers specification.
- Polycarbonate opaque Custom Orb skylight fitted.

Door

- Door framed with Palmer Supa Gal RHS, lined with Lysaght RO820 mesh.
- Mounted on slide rail at top with bottom guides.
- The mesh is orientated to not allow vision into the toilet space when the door is closed.

Pedestals (Sewer/septic configuration)

- Dual 6/3 flush cistern and P trap pan is fitted. No sewer drainage plumbing is provided. Access holes for the P trap pan and sink outfall drainage is made through the wall and concrete floor.

Pedestals (CWT configuration)

- Pureblue stainless steel AS1428.1 (2001) and AS1546.1 compliant pedestal fitted plus below the floor odour skirt. All fixed by tamperproof stainless steel button head bolts. Special key supplied to client on delivery.

Internal furniture

- Toilet paper holder is fabricated from pipe and flat bar, hot dipped galvanised, with capacity for quantity three standard rolls with 8mm stainless lock bar and pad lock.

Plumbing

- Half inch copper silver soldered in jig and tested. Lagged and fitted to trenches cast in to the underside of the concrete floor.

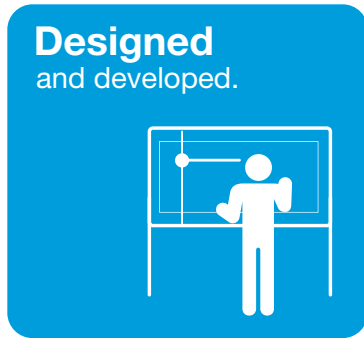
Handbasin

- Clark Y 4200 Stainless steel sink mounted internally.
- Tap is an Enware T48 spring to close. All below sink plumbing secured by Colorbond sheet enclosure.

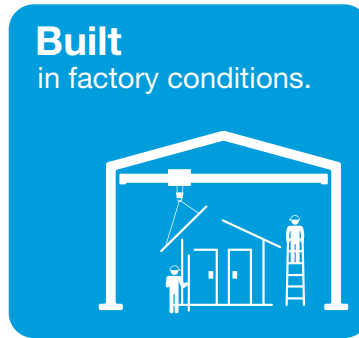


Construction strategy

The construction philosophy of Pureablue is a focus on quality design and pre-fabrication style construction of steel and concrete components. Pre-fabrication allows for more manufacturing possibilities and also ensures high quality as work can be performed in factory conditions with specialized tools that are impractical and costly to transport to the construction site.



Designed
and developed.



Built
in factory conditions.



Transported
to site.

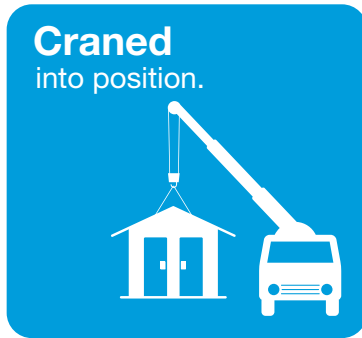


1 Our specialist team of architectural designers equipped with the latest 3D Cad tools work closely with our construction team to achieve designs that result in quality solutions and craftsmanship.

2 Our philosophy is to build as much of the project in our workshop as possible to achieve the greatest quality and efficiency. We always have the right tools on hand for the job, and have the right environment for the best craftsmanship.

3 The job is shipped as a 'package' of all required component ready for installation. Transport trucks are organised to arrive on site when the installation team has completed ground work and ready for the building.

By minimizing on-site work we can minimize unforeseen variables, such as bad weather, which can make projects run over time and over budget. Also, site costs such as barricading and risks of public injury are minimised.



4 Buildings and auxiliary structures are craned into position. Final trim components are added.



5 If applicable, water and sewerage services are connected. Facility is tested and cleaned ready for opening.



6 Final handover of fully complete operational facility including system management and maintenance guide.

Pre-Fab Building Range

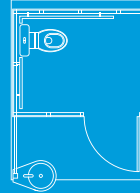
Breezyloo[®] **Standard**



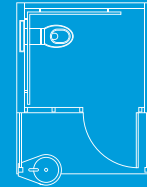
Windyloo[®] **Standard**



Countrystyle[®] **CS1**



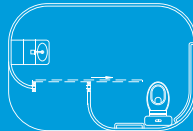
CAB[®] **1**



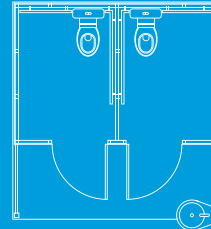
Breezyloo[®] **Disabled**



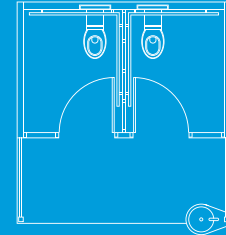
Windyloo[®] **Disabled**



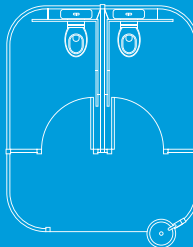
Countrystyle[®] **CS2**



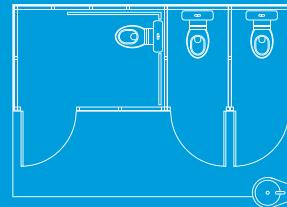
CAB[®] **2**



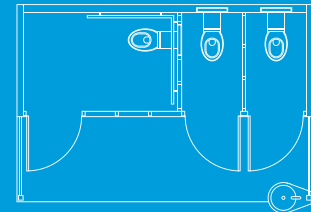
Windyloo[®] **Dual**



Countrystyle[®] **CS3**



CAB[®] **3**



T 02 6772 3810

W www.pureablue.com.au

E info@pureablue.com.au