



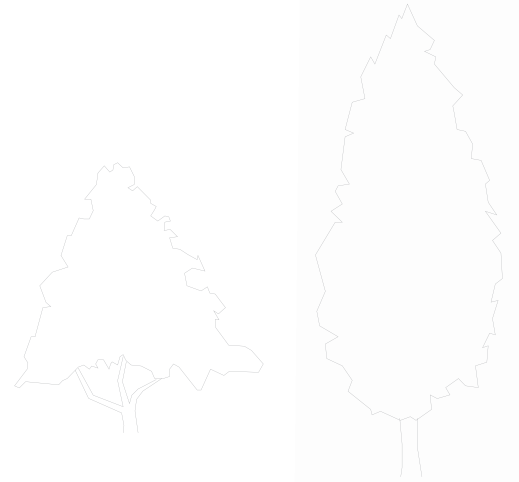
Pre-Engineered Buildings

# Countrystyle<sup>®</sup> CS3



# Contents

- 03** Overview
- 04** Plans & Elevations
- 06** Project Archive
- 08** General Specifications
- 10** Our Construction Strategy
- 12** Other Pre-Fab Buildings

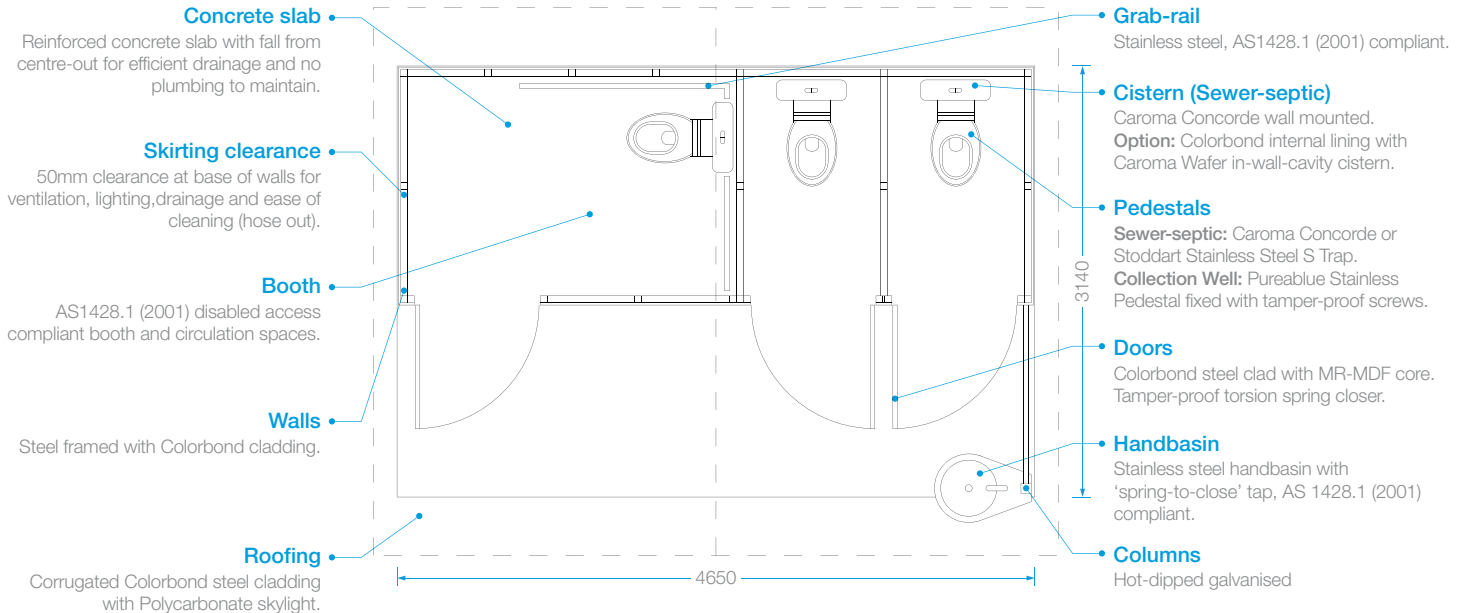




## Countrystyle<sup>®</sup>CS3

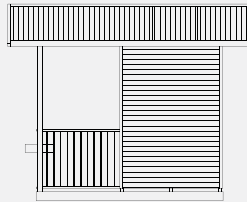
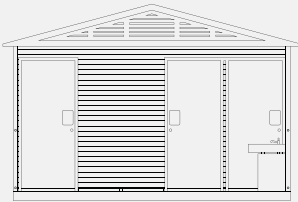
A traditional style building, steel framed with Colorbond cladding housing a AS1428.1 (2001) disabled access compliant unisex booth and two standard booths. The building is suited for urban parks with sewer and water facilities as well as remote applications with a collection well or onsite treatment waste system configuration. Customisations include an enclosed plant room at the rear of the building to house cisterns, cleaning equipment and plumbing.

# Plans & elevations

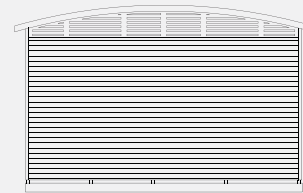
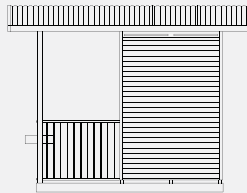
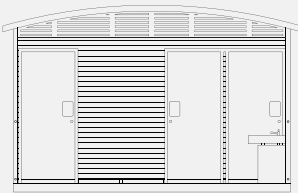


**Design Option** Plant room extension on rear of building for access to concealed cisterns and house cleaning equipment and plumbing

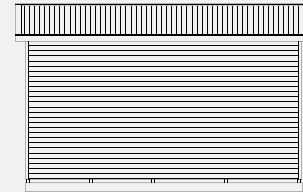
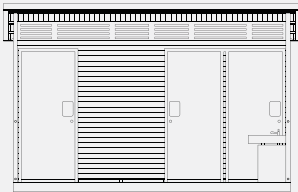
## Pitched Roof



## Curved Roof



## Skillion Roof



We can supply detailed drawings of building integration with waste systems in PDF and CAD Drawing format.

# Project gallery





# General specifications

## General

- Generally, the buildings are of steel and concrete construction, most suited to non urban areas where hardy construction, ease of maintenance and vandal resistance is a major design factor.
- The booths and sink area are designed to conform to AS1428.1 (2001) Disabled Access.

## Floor/slab

- Precast steel moulded floor, 100mm thick, 32 mpa concrete.
- Floor cast in one piece with Swiftlift lifting points cast into top surface.
- One layer RF 82 mesh with Y12 perimeter and Y12 longitudinal reinforcement.
- Qty 24 Ramset 12 mm concrete inserts to fix structure via M12 stainless steel grade 304 bolts.
- Qty 6 Ramset 16mm inserts cast in to floor slab edge for wind loading/anti-floatation tie down bolt assemblies.

## Structure

- Support columns, front wall frame and rear wall frame are fabricated from 50x50 RHS pregalvanised with 50x5 durgal purlin cleats and base plates fully welded to the columns.
- Facias and purlins fabricated from 100 x 50 and 50 x 50 pregal RHS, all welded all round with 4.0mm fillet welds.
- The structure is delivered bolted to the concrete floor.

## External cladding

- The external cladding is Colorbond Custom Orb. All cladding fixed with

multiple screws in pan.

- Roof fixed with Colorbond matched screws to manufacturers specification.
- The CS3 internal walls are lined both sides with Panelrib multiple fixed by 3mm pop rivets and adhesive.

## Roofing

- Colorbond 0.42 Custom Orb decking fixed with colour matched crest fixed screws to manufacturers specification.
- Polycarbonate opaque Custom Orb skylight fitted.

## Ground anchor system

- GAS bolts fabricated from 16mm round bar, 16mm threaded rod, 50 x 5 flat bar, hot dipped galvanized after fabrication - Fixed to floor slab by M16 x 40 galvanised grade 4.6 bolts.
- Sewer/septic configuration anchored by cast on site concrete blocks poured after building placement. CWT configuration anchored by Qty 6 concrete blocks located at the invert level of the collection well.

## Internal furniture

- Integral stainless steel AS1428.1 (2001) compliant handrails, fabricated (welded) in to the internal wall structure.
- Stainless steel Jumbo toilet rolls fitted per AS1428.1 (2001) to each booth.

## Pedestals (Sewer/septic configuration)

- Qty 3 Caroma Concorde AS1428.1 (2001) compliant pans with Caroma dual flush cistern fitted. Flush pipe is stainless steel. Pan fixed to floor by silicone and stainless steel screws

## Pedestals (CWT configuration)

- Qty 3 Pureablue stainless steel AS1428.1 (2001) and AS1546.1 compliant pedestals are fitted plus below the floor odour skirt. All fixed by tamperproof stainless steel button head bolts. Special key supplied to client on delivery.

## External furniture

- Handrails to verandah area fabricated from 25NB pipe, 16mm round bar, all hot dipped galvanized after fabrication. Handrail design based on swimming pool fence design - top and bottom horizontal members only with plain vertical members giving no toe hold for climbing.
- Verandah columns hot dipped galvanized after fabrication.

## Handbasin

- A 300 diameter round stainless steel sink mounted in a fabricated hot dipped galvanised sink column with multiple 3mm pop rivet fixing for vandal resistance. Optional additional basin inside disabled booth.
- Tap is an Enware T48 spring to close. All below sink plumbing secured by Colorbond sheet enclosure.

## Water storage (CWT configuration)

- An Aquaplate 500 litre tank is fabricated in to the rear of the building, integral with the structure. A pregal RHS fully encloses the tank with matching Colorbond external cladding. Vandal removal of the tank is impossible. Water connection to tap over the sink by crimped Auspex polybutelene tubing underground and guarded from tank exit to concrete floor with Colorbond flashing.

## Doors

- Doors custom built with 32 MRMDF framing, clad both sides with Colorbond flat sheet, with 32mm polystyrene foam infill. MRMDF to foam to Colorbond steel bonded with adhesive and stainless steel screws.
- Door swung on Qty three 100 mm plated fixed pin door hinges.

## Door furniture

- Hydraulic door closers fitted or zinc plated tamperproof torsion springs, with inbuilt rubber door stop arrestors fitted along the steel door reveal. These cannot be removed without special tooling.
- Privacy latches with emergency external unlatching and male/female and disabled signage with stainless steel push plates on external door face.
- Pull handles to AS 1428.1 (2001) are mounted on the internal face.
- Optional dead locks for night lock up.

## Options

### Lighting

- **240V system:** Qty 3, 18 watt Vandalites with motion sensor in a security box with removable mesh panel fixed with tamperproof screws.
- **BYO Light:** A Pureablue developed vandal-resistant lighting system for remote sites. Reflects the lights from visitor vehicles to light toilet booths.

### Pedestals

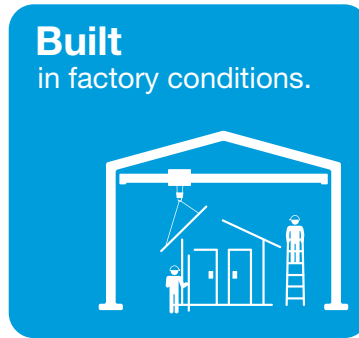
- **Stainless Steel pedestals:** Stoddart Steel Sure S trap pedestal
- **In-wall cisterns:** Colorbond Panel Rib internal wall cladding and Caroma wafer in wall cavity cisterns.

# Construction strategy

The construction philosophy of Pureablue is a focus on quality design and pre-fabrication style construction of steel and concrete components. Pre-fabrication allows for more manufacturing possibilities and also ensures high quality as work can be performed in factory conditions with specialized tools that are impractical and costly to transport to the construction site.



**Designed**  
and developed.



**Built**  
in factory conditions.



**Transported**  
to site.

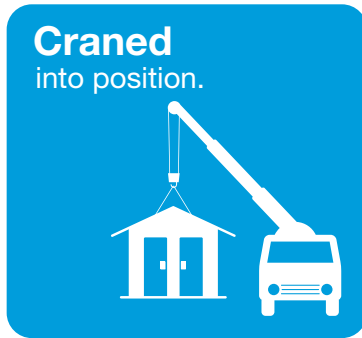


**1** Our specialist team of architectural designers equipped with the latest 3D Cad tools work closely with our construction team to achieve designs that result in quality solutions and craftsmanship.

**2** Our philosophy is to build as much of the project in our workshop as possible to achieve the greatest quality and efficiency. We always have the right tools on hand for the job, and have the right environment for the best craftsmanship.

**3** The job is shipped as a 'package' of all required component ready for installation. Transport trucks are organised to arrive on site when the installation team has completed ground work and ready for the building.

By minimizing on-site work we can minimize unforeseen variables, such as bad weather, which can make projects run over time and over budget. Also, site costs such as barricading and risks of public injury are minimised.



**4** Buildings and auxiliary structures are craned into position. Final trim components are added.



**5** If applicable, water and sewerage services are connected. Facility is tested and cleaned ready for opening.



**6** Final handover of fully complete operational facility including system management and maintenance guide.

# Pre-Fab Building Range

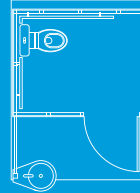
Breezyloo<sup>®</sup> **Standard**



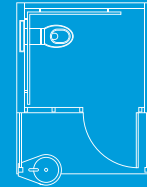
Windyloo<sup>®</sup> **Standard**



Countrystyle<sup>®</sup> **CS1**



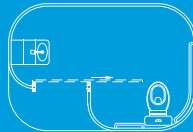
CAB<sup>®</sup> **1**



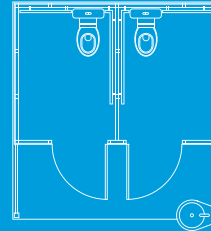
Breezyloo<sup>®</sup> **Disabled**



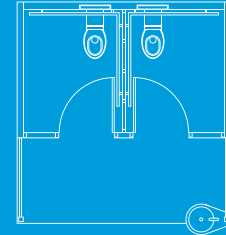
Windyloo<sup>®</sup> **Disabled**



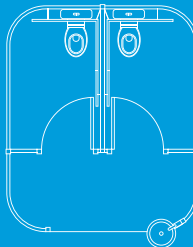
Countrystyle<sup>®</sup> **CS2**



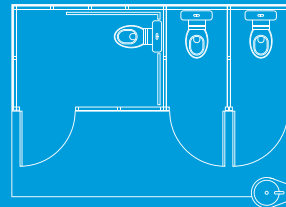
CAB<sup>®</sup> **2**



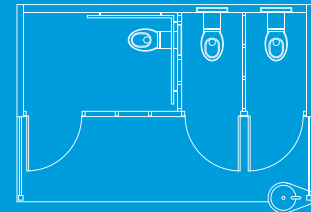
Windyloo<sup>®</sup> **Dual**



Countrystyle<sup>®</sup> **CS3**



CAB<sup>®</sup> **3**



T 02 6772 3810

W [www.pureablue.com.au](http://www.pureablue.com.au)

E [info@pureablue.com.au](mailto:info@pureablue.com.au)